

**Law and Governance**

Direct Line: 01865 252214

E-mail: [fullcouncil@oxford.gov.uk](mailto:fullcouncil@oxford.gov.uk)

**Town Hall**

St. Aldate's  
Oxford OX1 1BX

[www.oxford.gov.uk](http://www.oxford.gov.uk)



Central Number: 01865 249811

To Members of the Council

15 December 2011

Our ref:

Your ref:

Dear Councillor

**COUNCIL - MONDAY 19 DECEMBER 2011**

I attach the following illustration which was not available when the main agenda was dispatched. This will also appear in the Briefing Note.

**Agenda No    Item**

22.    **Barton Area Action Plan - Proposed Submission Draft (Pages 1 - 2)**

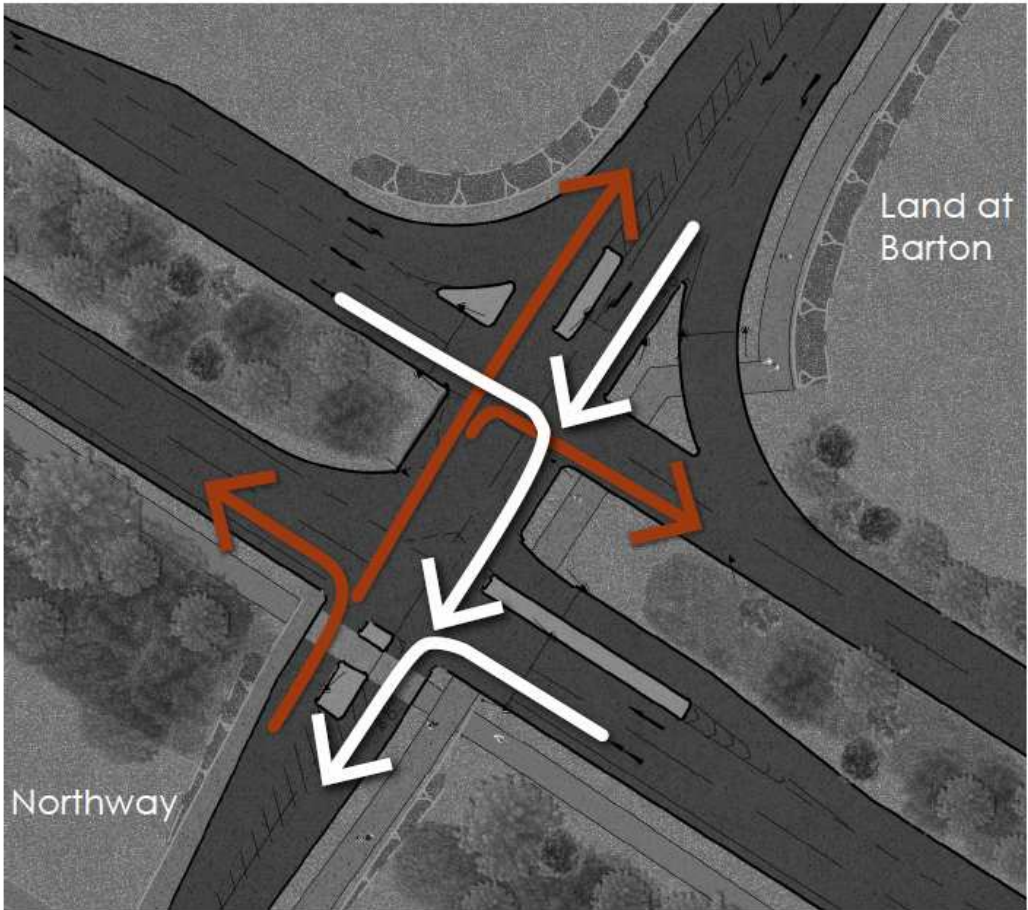
Yours sincerely

Mathew Metcalfe, Democratic Services Officer  
Democratic Services Officer  
Encs

This page is intentionally left blank

Barton Area Action Plan Proposed Submission: Draft for Council, 19 December 2011

Illustration 9a – Diagram showing potential bus and emergency vehicle movements to and from Northway



Potential Bus and Emergency Vehicle Only movements from Northway

Potential Bus and Emergency Vehicle Only movements into Northway

This page is intentionally left blank